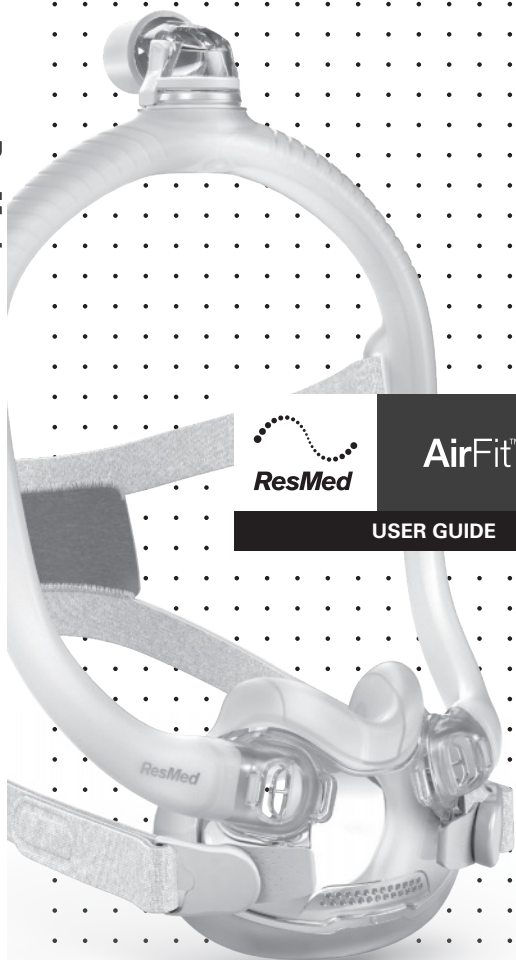


ResMed

AirFit™ F30i

User guide



AirFit™ F30i

USER GUIDE

English  
Deutsch  
Français  
Italiano  
Nederlands  
Svenska  
Norsk  
Suomi  
Dansk  
Español  
Português  
Česky  
Polski  
Ελληνικά  
Türkçe  
العربية



Device setting

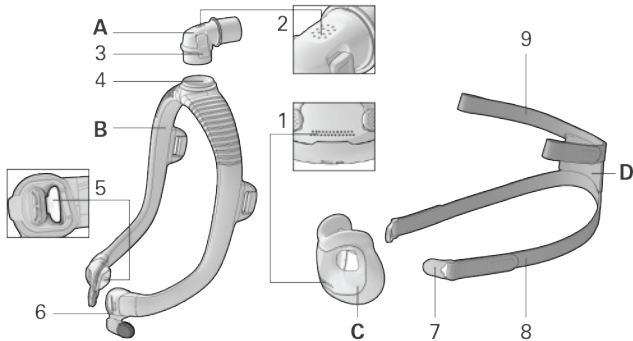
Full face



Full face  
mask

## ENGLISH

Thank you for choosing the AirFit™ F30i full face mask. This mask uses a cushion that seals under the nose and around the mouth, and a frame with a tube connection above the head. To breathe fresh air, this mask features vent holes in the cushion and elbow, and valves in the frame.



- |   |                      |   |  |
|---|----------------------|---|--|
| A | Elbow                | 4 | Elbow ring   |
| B | Frame                | 5 | Anti-Asphyxia valve (inside the left and right of frame connector) |
| C | Cushion              | 6 | Frame connector  |
| D | Headgear             | 7 | Magnetic clip  |
| 1 | Vent holes (cushion) | 8 | Lower headgear strap   |
| 2 | Vent holes (elbow)   | 9 | Upper headgear strap   |
| 3 | Side button          |   |  |

### Intended Use

The AirFit F30i mask is intended to be used by patients weighing more than 30 kg who have been prescribed non-invasive positive airway pressure (PAP) therapy such as CPAP or bi-level therapy. The mask is intended for single patient re-use in the home and multi-patient re-use in the hospital/institutional environment.

## Clinical benefits

The clinical benefit of vented masks is the provision of effective therapy delivery from a therapy device to the patient.

## Intended patient population/medical conditions

Obstructive pulmonary diseases (eg, Chronic Obstructive Pulmonary Disease), restrictive pulmonary diseases (eg, diseases of the lung parenchyma, diseases of the chest wall, neuromuscular diseases), central respiratory regulation diseases, obstructive sleep apnoea (OSA) and obesity hypoventilation syndrome (OHS).

## Contraindications

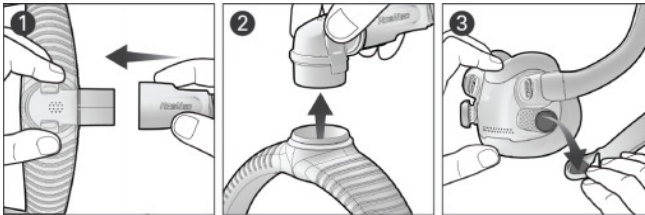
Use of masks with magnetic components is contraindicated in patients with the following pre-existing conditions:

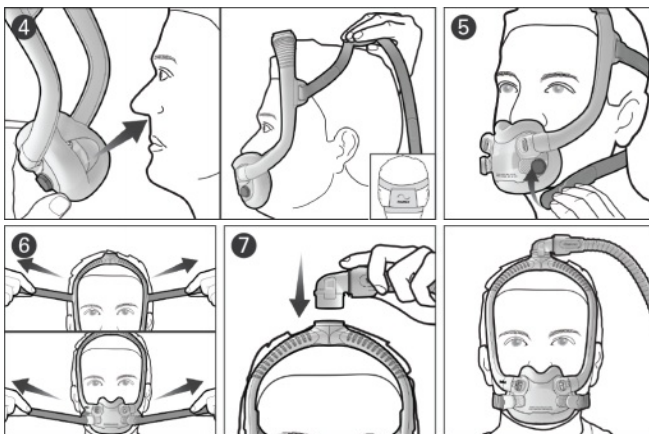
- a metallic hemostatic clip implanted in your head to repair an aneurysm
- metallic splinters in one or both eyes.

## Before using your mask

Remove all packaging and inspect each mask component for visible deterioration.

## Fitting your mask





1. Connect the air tubing from your device to the elbow.
2. Squeeze the side buttons on the elbow and pull from the frame. Put the elbow and air tubing aside for now.
3. Twist and pull both magnetic clips away from the frame connectors.
4. Place the cushion under your nose and ensure it sits comfortably against your face. With the ResMed logo on the headgear facing up, pull the headgear and frame over your head.
5. Bring the lower headgear straps under your ears and attach the magnetic clips to the frame connectors.
6. Undo the fastening tabs on the upper headgear straps and pull evenly. Repeat with the lower headgear straps.
7. Attach the elbow to the top of the frame. Your mask should now be positioned as shown.

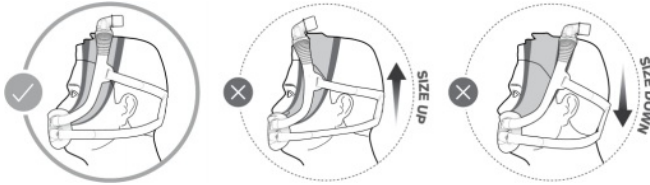
### Adjusting your mask

- With the device turned on and blowing air, adjust the position of the cushion for the most comfortable seal under your nose. Ensure that the cushion is not creased and the headgear is not twisted.
- To fix any mask leaks, adjust the upper or lower headgear straps. Adjust only enough for a comfortable seal and do not overtighten.

### Sizing the mask

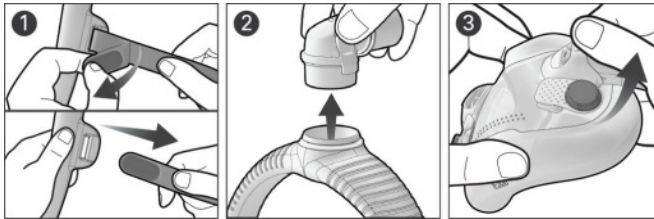
Use the fitting template to assist in selecting the right size cushion.

If the mask frame falls back over your head or sits too close to your ears, try a smaller frame size. If the mask falls forward on your head or sits too close to your eyes, try a bigger frame size.



### Disassembling your mask for cleaning

If your mask is connected to a device, disconnect the device air tubing from the mask elbow.



1. Undo the fastening tabs on the upper headgear straps and pull from the frame. Keep the magnetic clips attached to the lower headgear straps.
2. Squeeze the side buttons on the elbow and detach from the frame.
3. Grip the frame connector and lift to unclip from the cushion. Repeat on the other side.

### Cleaning your mask

If there is any visible deterioration of a mask component (cracking, crazing, tears etc.) the component should be discarded and replaced.

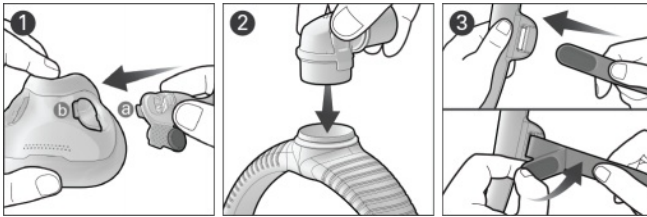
**Daily/After each use:** Cushion

**Weekly:** Headgear, frame and elbow

1. Soak the components in warm water with a mild liquid detergent.
2. Hand wash the components with a soft bristle brush. Pay particular attention to the vent holes in both cushion and elbow.
3. Thoroughly rinse the components under running water.
4. Leave the components to air dry out of direct sunlight.

If the mask components are not visibly clean, repeat the cleaning steps. Make sure that the vent holes and anti-asphyxia valves are clean and clear.

**Reassembling your mask**



1. Align and insert the frame connector tab (a) into the cushion slot (b) and press down until it clicks. Repeat on the other side.
2. Attach the elbow to the top of the frame until it clicks.
3. With the ResMed logo facing outwards and up, insert the upper headgear straps into the frame from the inside and fold the fastening tabs over to secure.

Note: If the elbow ring detaches, re-insert into the top of the frame.

**⚠ WARNING**

- Magnets are used in the lower headgear straps and the frame of the mask. Ensure the headgear and frame is kept at least 50 mm away from any medical implant (eg, pacemaker, defibrillator, magnetic cerebrospinal fluid (CSF) shunt valve, cochlear implants etc) to avoid possible effects from localized magnetic fields. The magnetic field strength is less than 400 mT.
- The mask contains safety features, the exhaust vent holes and anti-asphyxia valves, to enable normal breathing and exhaust exhaled breath. Occlusion of the exhaust vent holes or anti-asphyxia valves needs to be prevented to avoid having an adverse effect

## WARNING

on the safety and quality of the therapy. Regularly inspect the vent holes and anti-asphyxia valves to ensure they are kept clean, clear of blockages and are not damaged.

- Only use compatible CPAP or bi-level therapy devices or accessories. The technical specifications of the mask are provided for healthcare professionals to determine compatible devices. Use in combination with incompatible medical devices can decrease the safety or alter the performance of the mask.
- The mask is not suitable for patients requiring life support ventilation.
- Regularly clean your mask and its components to maintain the quality of your mask and to prevent the growth of germs that can adversely affect your health.
- The mask must be used under qualified supervision for patients who are unable to remove the mask by themselves. The mask may not be suitable for those prone to aspiration.
- The mask should not be used unless the device is turned on. Once the mask is fitted, ensure the device is blowing air to reduce risk of rebreathing exhaled air.
- Discontinue using or replace this mask if the patient has ANY adverse reaction to the use of the mask. Consult your physician or sleep therapist.
- Follow all precautions when using supplemental oxygen.
- Oxygen flow must be turned off when the CPAP or bilevel device is not operating, so that unused oxygen does not accumulate within the device enclosure and create a risk of fire.
- Oxygen supports combustion. Oxygen must not be used while smoking or in the presence of an open flame. Only use oxygen in well ventilated rooms.
- At a fixed rate of supplemental oxygen flow, the inhaled oxygen concentration varies, depending on the pressure settings, patient breathing pattern, mask, point of application and leak rate. This warning applies to most types of CPAP or bilevel devices.
- The mask is not intended to be used simultaneously with nebuliser medications that are in the air path of the mask/tube.
- If there is any visible deterioration of a mask component (cracking, crazing, tears etc.) the component should be discarded and replaced.

## CAUTION

- Always follow cleaning instructions and only use a mild liquid detergent. Some cleaning products may damage the mask, its parts and their function, or leave harmful residual vapours. Do not use a dish washer or washing machine to clean the mask.

## CAUTION

- When fitting the mask, do not overtighten the headgear as this may lead to skin redness or sores around the mask cushion.
- As with all masks, some rebreathing may occur at low pressures.
- Using a mask may cause tooth, gum or jaw soreness or aggravate an existing dental condition. If symptoms occur, consult your physician or dentist.
- Do not iron the headgear as the material is heat sensitive and will be damaged.

**Note:** For any serious incidents that occur in relation to this device, these should be reported to ResMed and the competent authority in your country.

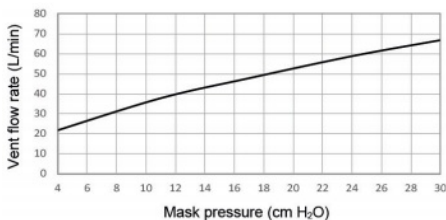
## Technical specifications

**Mask setting options:** For AirSense, AirCurve or S9: Select 'Full Face'.

**Compatible devices:** For a full list of compatible devices for this mask, see the Mask/Device Compatibility List at [ResMed.com/downloads/masks](https://www.resmed.com/downloads/masks).

SmartStop may not operate effectively when using this mask with some CPAP or bi-level devices.

### Pressure-flow curve



Pressure (cm H <sub>2</sub> O)	Flow (L/min)
4	22
11	38
17	48
24	59
30	67

**Therapy pressure:** 4 to 30 cm H<sub>2</sub>O

**Resistance with Anti Asphyxia Valve closed to atmosphere**

Drop in pressure measured (nominal) at 50 L/min: 0.2 cm H<sub>2</sub>O

Drop in pressure measured (nominal) at 100 L/min: 1.0 cm H<sub>2</sub>O

**Resistance with Anti Asphyxia Valve open to atmosphere**

Inspiration at 50 L/min: 0.2 cm H<sub>2</sub>O

Expiration at 50 L/min: 0.4 cm H<sub>2</sub>O

**Anti-Asphyxia Valve open-to-atmosphere pressure:** <4 cm H<sub>2</sub>O

**Anti-Asphyxia Valve closed-to-atmosphere pressure:** <4 cm H<sub>2</sub>O

**Sound:** Declared dual-number noise emission values in accordance with ISO4871:1996 and ISO3744:2010. A-weighted sound power level is 25 dBA, with uncertainty of 3 dBA. A-weighted pressure level at a distance of 1 m is 18 dBA, with uncertainty of 3 dBA.

**Environmental conditions**

Operating temperature: 5°C to 40°C

Operating humidity: 15% to 95% RH non-condensing

Storage and transport temperature: -20°C to +60°C

Storage and transport humidity: up to 95% RH non-condensing

**International Commission on Non-Ionizing Radiation Protection (ICNIRP)**

Magnets used in this mask are within ICNIRP guidelines for general public use.

**Service life:** The service life of the mask system is dependent on the intensity of usage, maintenance, and environmental conditions to which the mask is used or stored. As this mask system and its components are modular in nature, it is recommended that the user maintain and inspect it on a regular basis, and replace the mask system or any components if deemed necessary or according to the instructions in the 'Cleaning your mask' section of this guide.

**Accessories:** Soft sleeves are available as an accessory,

## Storage

Ensure that the mask is thoroughly clean and dry before storing it for any length of time. Store the mask in a dry place out of direct sunlight.

## Disposal

This product and packaging do not contain any hazardous substances and may be disposed of with your normal household refuse.

## Reprocessing the mask between patients

Reprocess this mask when using between patients. Reprocessing instructions are available on [ResMed.com/downloads/masks](https://www.resmed.com/downloads/masks).

## Symbols

The following symbols may appear on your product or packaging:



Full Face Mask



Small frame



Large frame



Device setting - Full Face



Standard frame



Cushion size - small

Full face mask

Small frame

Large frame

Device setting- Full face


Standard frame

Cushion size - small

 Cushion size - medium

 Cushion size - small wide

 Cushion size - wide

 Not made with natural rubber latex

 Medical device

 Importer

See symbols glossary at [ResMed.com/symbols](https://www.resmed.com/symbols).

### Consumer warranty

ResMed acknowledges all consumer rights granted under the EU Directive 1999/44/EC and the respective national laws within the EU for products sold within the European Union.



en	Full face mask
de	Full Face Maske
fr	Masque facial
it	Maschera oro-nasale
nl	Volgelaatsmasker
sv	Helmask
no	Helmaske
fi	Kokokasvomaski
da	Hel ansigtsmaske
es	Mascarilla facial
pt	Máscara facial
cz	Celoobličejová maska
pl	Maska pełnotwarzowa
el	Μάσκα για ολόκληρο το πρόσωπο
tr	Tam yüz maskesi
ar	قناع الوجه الكامل



Device setting

Full face



Full face  
mask



**ResMed Pty Ltd**

1 Elizabeth Macarthur Drive  
Bella Vista NSW 2153 Australia

MANUFACTURER

See ResMed.com for other ResMed locations worldwide. AirFit, AirSense, AirCurve and S9 are trademarks and/or registered trademarks of the ResMed family of companies. For patent and other intellectual property information, see ResMed.com/ip. © 2021 ResMed. 638255/1 2021-04

ResMed.com

CE 0123



638255