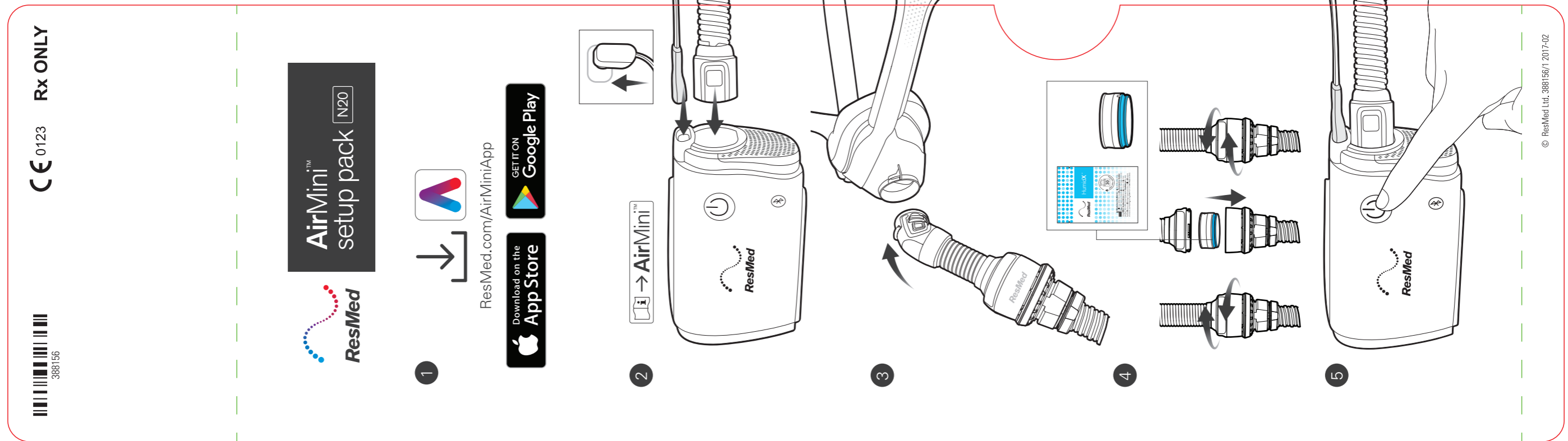


- 1. Scope** This specification defines the Artwork and Master Spec to be used for printing the **N20 for AirMini QSG Insert**
- 2. Artwork File** For printing, use the .pdf file  
**388156 N20 for AirMini QSG Insert**  
 Rev 1.0 [created from the \_curves.ai file in 388156 .zip.]
- 3. Master Spec** For all other part information, refer to the latest revision of the Master Specification - **R380-7742 QSG Master Spec MONACO**
- 4. Inspection Criteria** For all part inspection criteria refer to **R380-7742 QSG Master Spec MONACO**
- 5. Artwork Gauges** None



| Rev | CN No. | Date        | Details                          | Drawn By     | Checked By    |
|-----|--------|-------------|----------------------------------|--------------|---------------|
| 1.0 | C42298 | 17 Feb 2017 | Initial Release of Specification | Gene Brennan | Alison Besley |
|     |        |             |                                  |              |               |
|     |        |             |                                  |              |               |
|     |        |             |                                  |              |               |

COLOURS

|          |             |            |           |
|----------|-------------|------------|-----------|
|          |             |            |           |
| Cyan (C) | Magenta (M) | Yellow (Y) | Black (K) |

CODES

Artwork

NOTES:  
 1. Scale 1:1 at A3  
 2. Dimensions in mm  
 3. GENERAL TOLERANCES (unless otherwise stated)  
 - Linear Dimensions +/- 0.25mm  
 - Angular Dimensions +/- 0.5°  
 - Printing tolerance between colours +/- 0.25mm  
 - Graphics registration with part +/- 0.4mm

This box = 40mm x 4mm